



Connect the Dots

How the Social Determinants of
Health Impact Prevention
Planning



RIZE CONSULTANTS



Nicole M Augustine

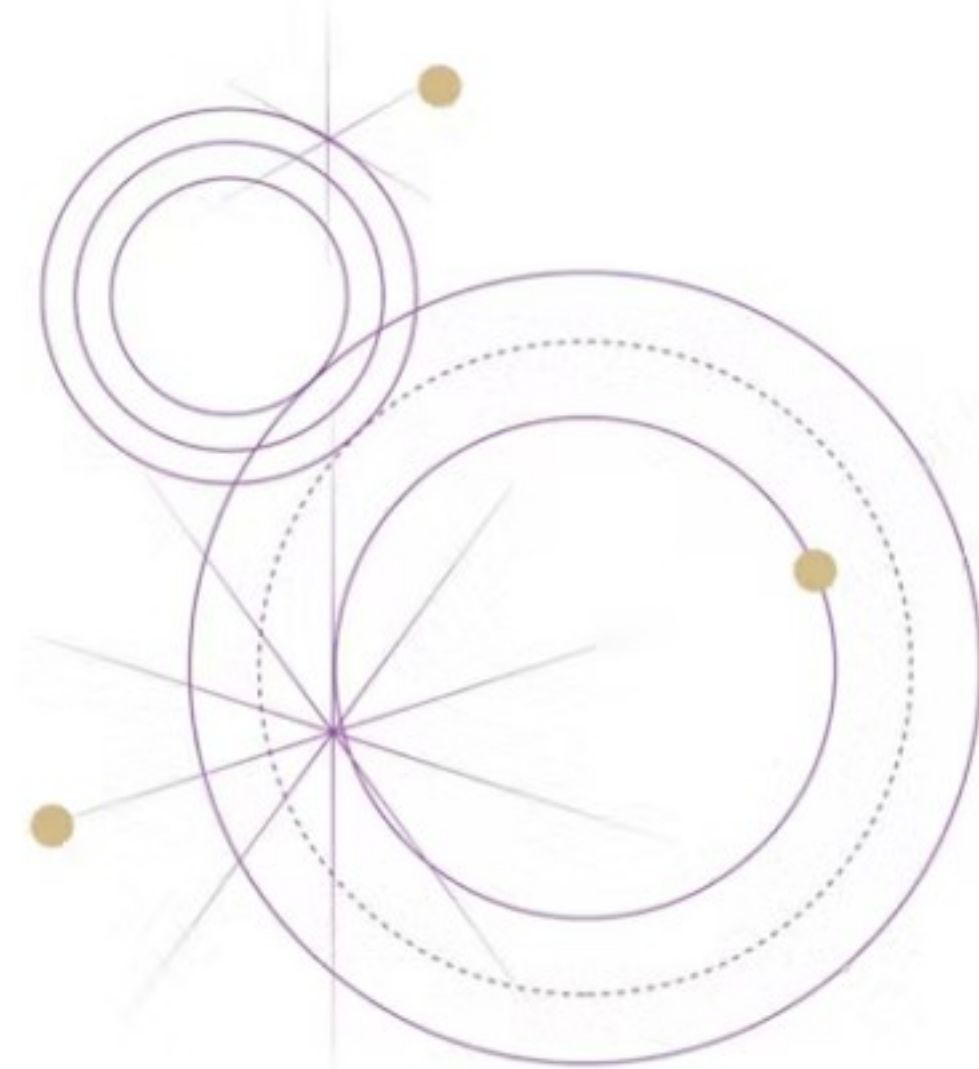
- Founder & CEO of RIZE Consultants, Inc
- Justice, Equity, Diversity & Inclusion (JEDI)
- Professional development for Prevention Specialist
- Strategic planning





Session

Objectives



1.

Understand the connection between environment and health

2.

Describe the Social Determinants of Health

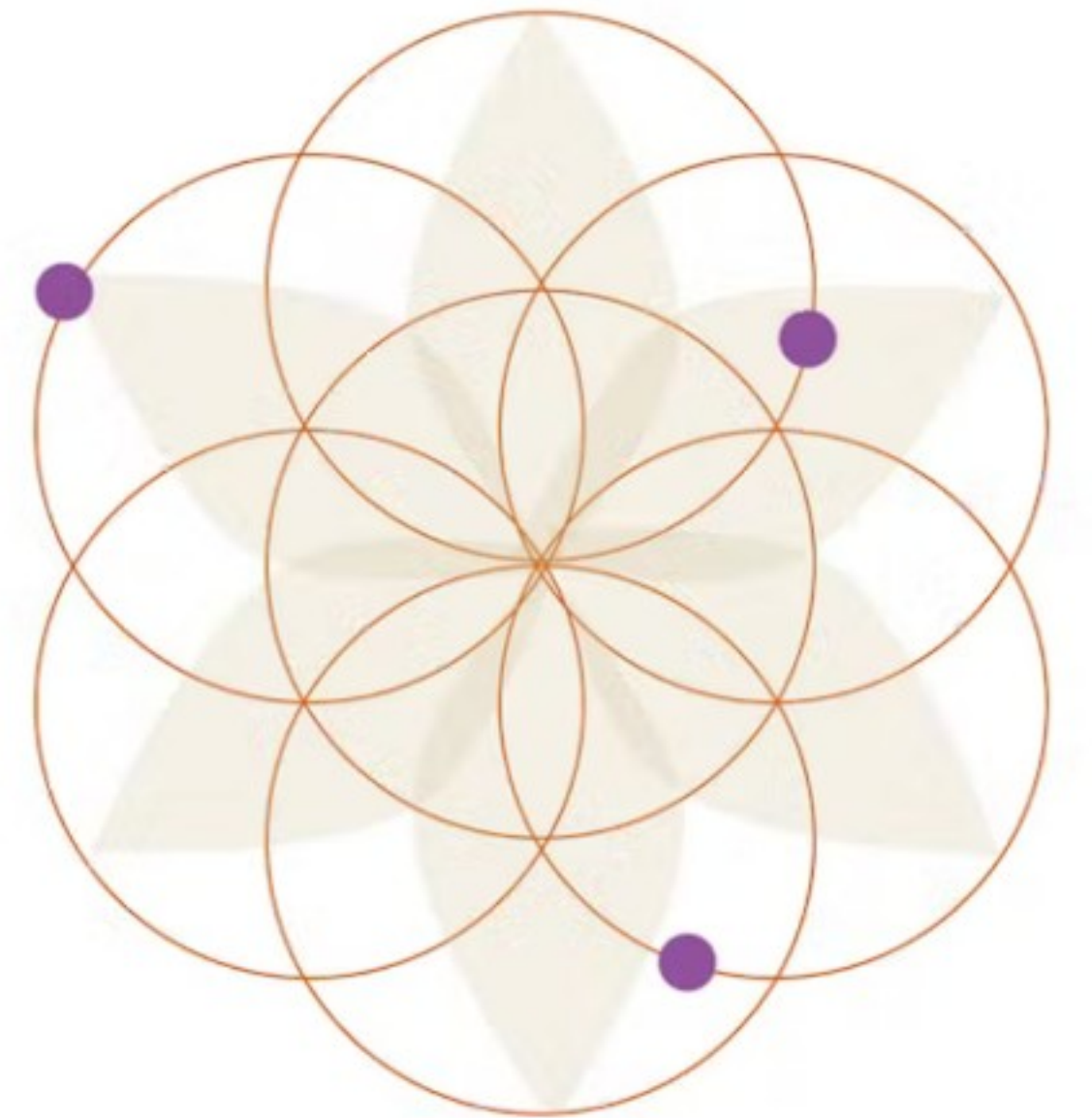
3.

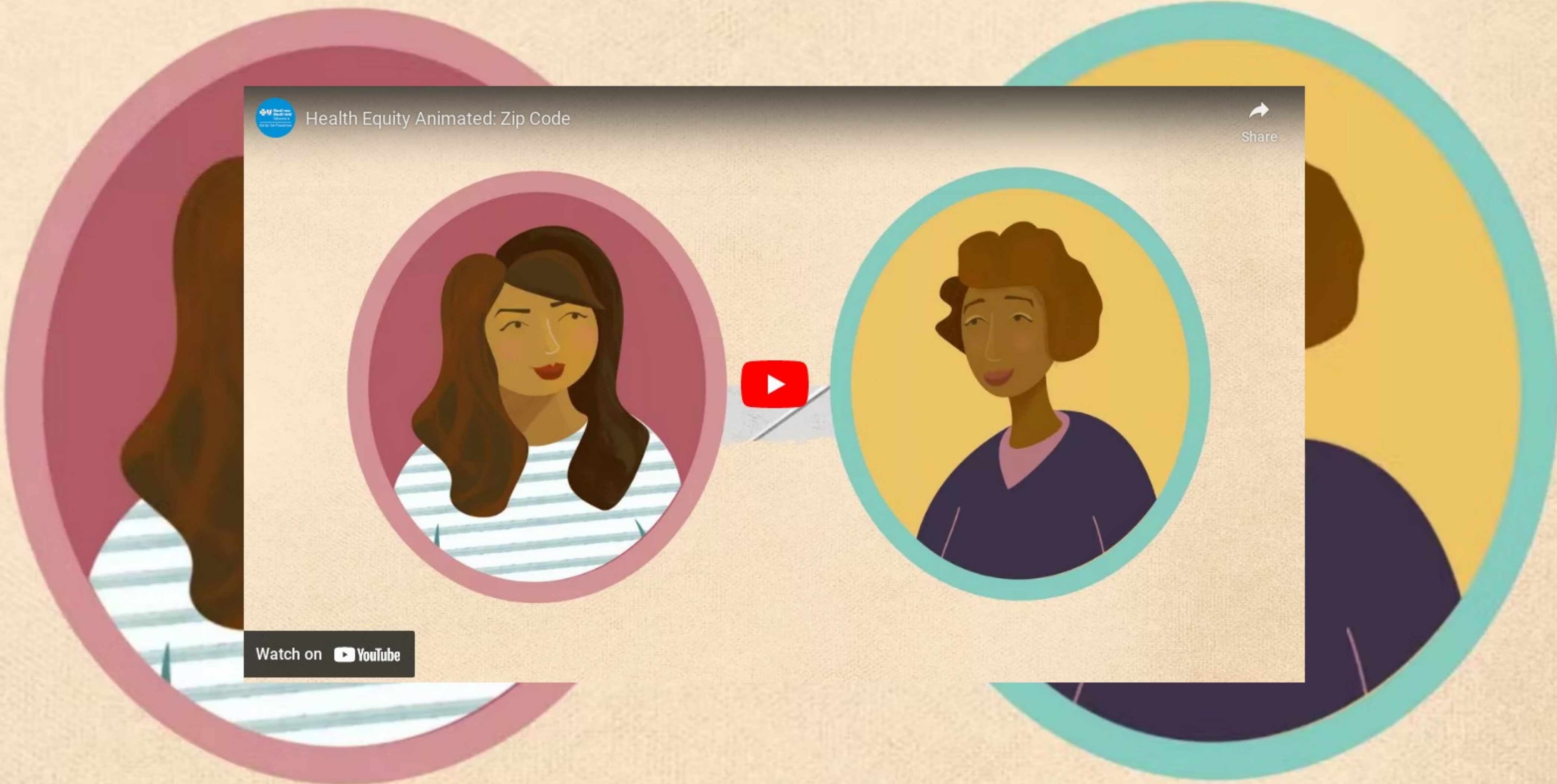
Articulate innovative approaches to our prevention practices



Objective 1

Understand the connection between environment and health





Health Equity Animated: Zip Code

Share

Watch on  YouTube

What stood out to you in this video?

Grass stained knees are a privilege.

The lyrics, poetry.

Disparities and opportunities driven by place you live/grow-up.

Concrete hotter than tree-covered streets

The difference of life between two good friends, good co workers, two communities between language too.

Living past the age of 15

That life is not linear it is circlelike and our differences don't define us. I loved the rhythm in the story

So many liquor stores....replaced with trees

Some cities hall has access to free food bank, medical screenings, language interpretation, while your next neighbor does not have it.


What stood out to you in this video?

Provide quality childcare when offering adult-oriented programs.



Federal Support for Equity

Executive Order 13985



“Because advancing equity requires a systematic approach to embedding fairness in decision-making processes, executive departments and agencies must recognize and work to redress inequities in their policies and programs that serve as barriers to equal opportunity.”

Federal Support for Equity

Executive Order 13985

Key Principles:

- Equity must be a central component of the decision-making framework that all agency functions are routed through.

Federal Support for Equity

Executive Order 13985

Key Principles:

- Equity must be a central component of the decision-making framework that all agency functions are routed through.
- Equity is not just a set of values; it must also be a set of tangible outcomes.

Federal Support for Equity

Executive Order 13985

Key Principles:

- Equity must be a central component of the decision-making framework that all agency functions are routed through.
- Equity is not just a set of values; it must also be a set of tangible outcomes.
- Equity benefits not just some of us, but all Americans. If we close the gaps in income, wealth, and financial security for families across the country, our economy will grow.

Federal Support for Equity

Executive Order 13985

Key Principles:

- Equity must be a central component of the decision-making framework that all agency functions are routed through.
- Equity is not just a set of values; it must also be a set of tangible outcomes.
- Equity benefits not just some of us, but all Americans. If we close the gaps in income, wealth, and financial security for families across the country, our economy will grow.
- Advancing equity is not a zero-sum game that benefits some communities at the expense of others.



What's the Need?

Substance misuse and substance use disorders also have serious economic consequences, costing more than \$400 billion annually in crime, health, and lost productivity.



What's the Need?

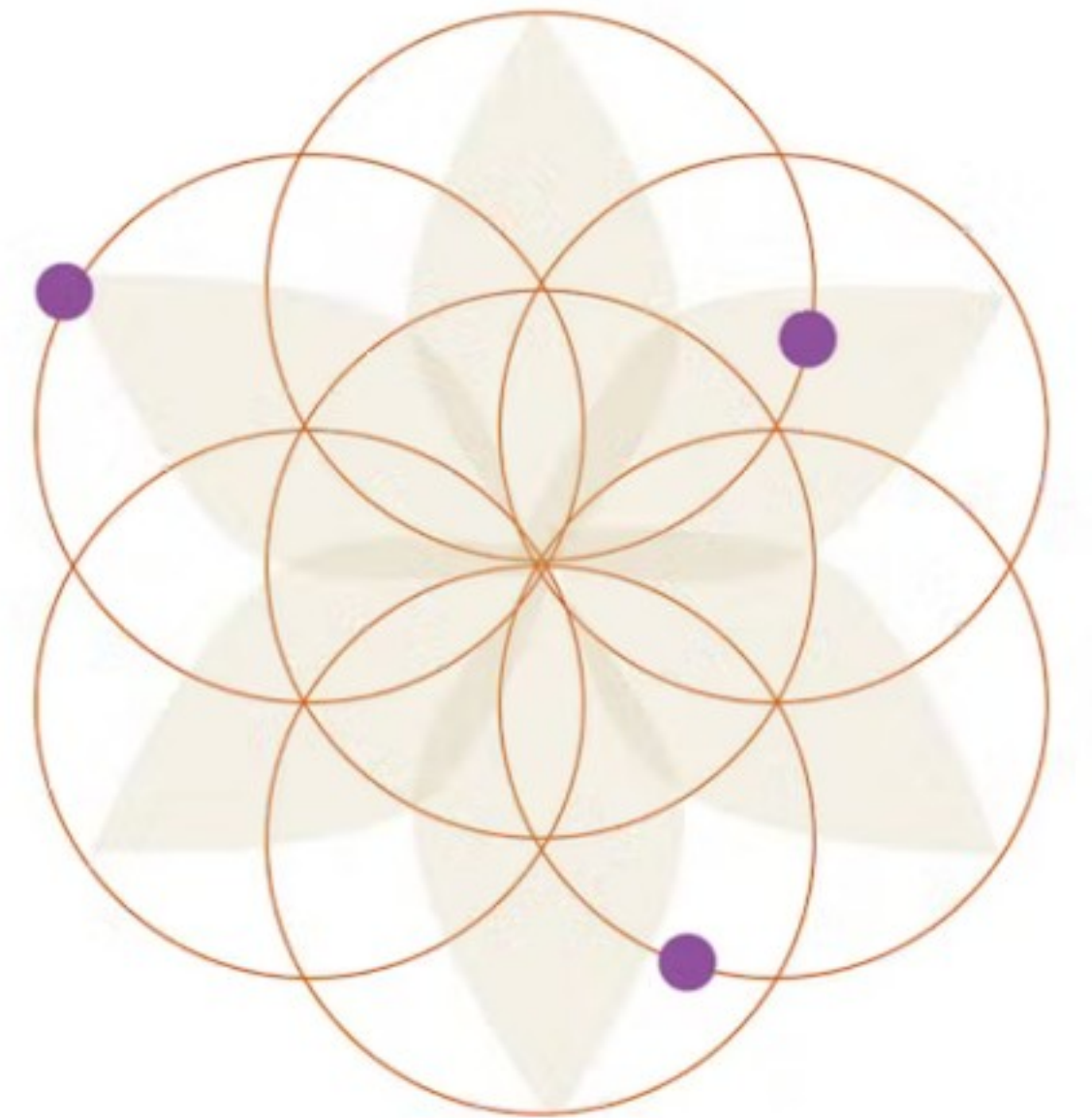
Substance misuse and substance use disorders also have serious economic consequences, costing more than \$400 billion annually in crime, health, and lost productivity.

Alcohol misuse and alcohol use disorders alone costs the United States approximately \$249 billion in lost productivity, health care expenses, law enforcement, and other criminal justice costs.



Objective 2

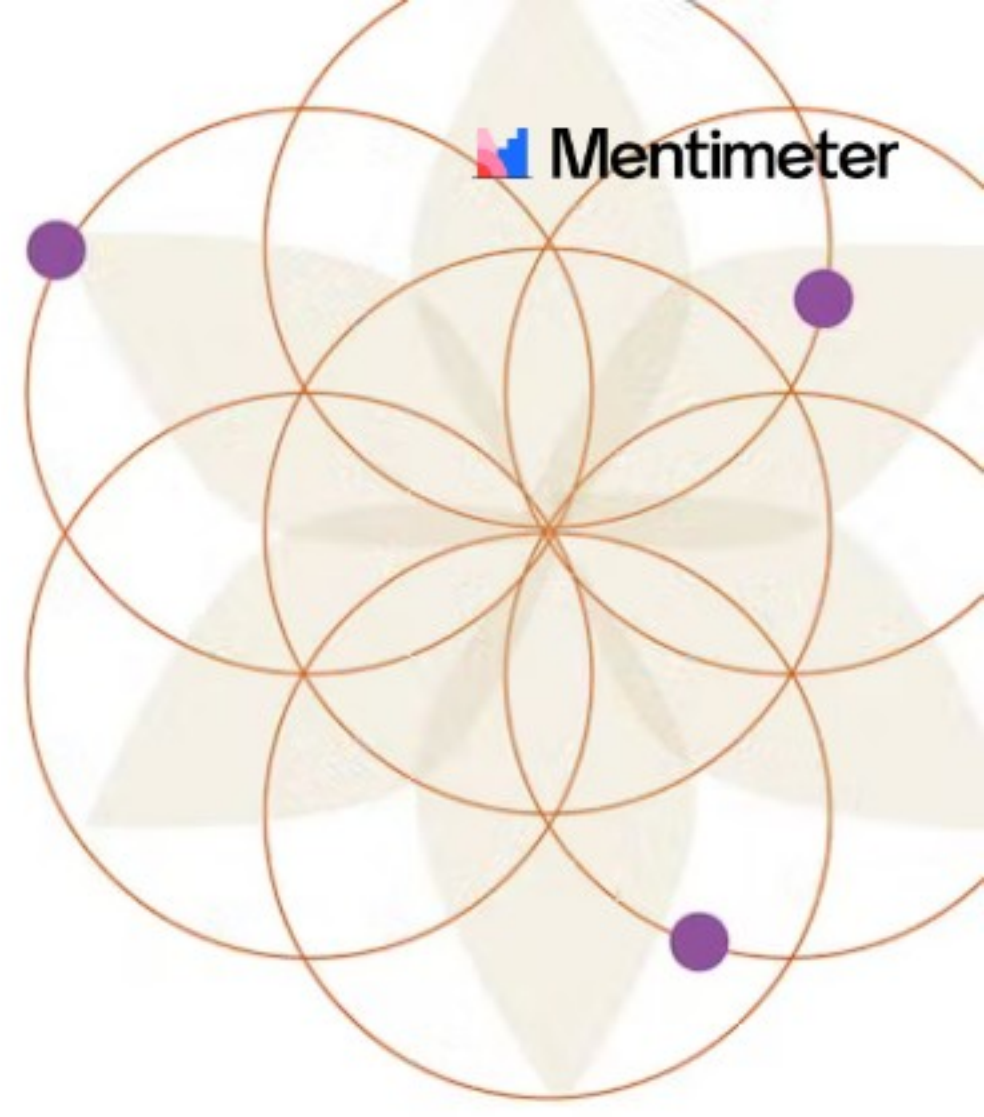
Describe the social determinant of health





Social Determinants of Health

Life-enhancing resources whose distribution across populations effectively determines length and quality of life.



**Health Care
and Quality**

**Neighborhood
and Built
Environment**

**Social and
Community
Context**

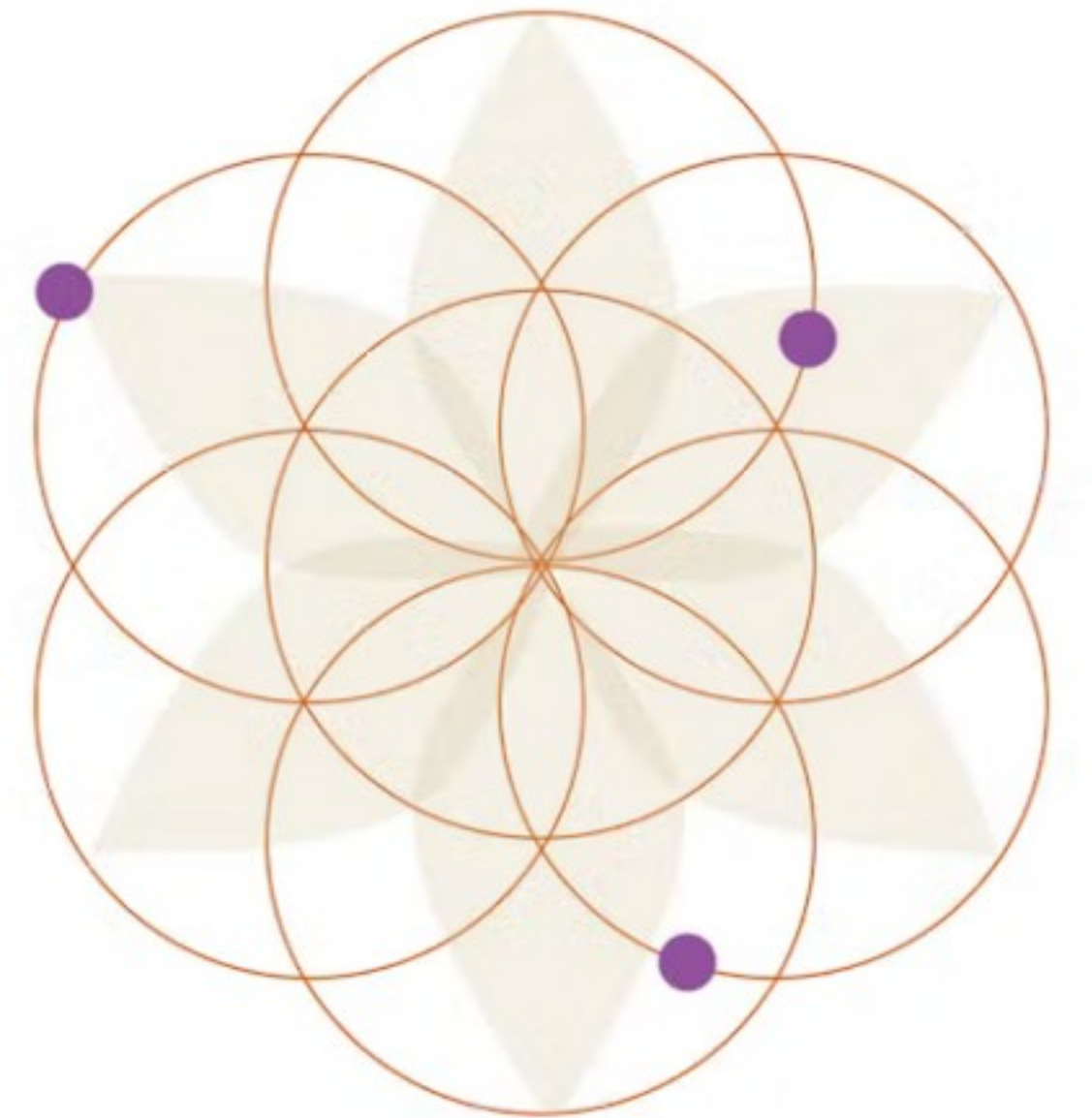
**Economic
Stability**

**Education
Access and
Quality**



Objective 3

Articulate innovative approaches to our prevention practice





Education Access and Quality

Early Childhood Education and Development

Enrollment in Higher Education

High school Graduation

Language and Literacy



In what way can we provide services that impact this domain?

affordable, accessible childcare

increased library or nonprofit programming in/near schools

SEL curriculum

Mentors to help increase HS graduation rate

School mental health services

Working as a team with Public Health Department, Public Schools, Church's too

Offer free parenting programs to address family conflict

offering services in languages other than English

I believe it would benefit schools to partner more with prevention efforts, education, in school support, mentoring programs, mental health support.

In what way can we provide services that impact this domain?

Ensuring that our programming is trauma informed

Programs to help with enrollment into post secondary schooling and filing out financial aid

Have social workers in all doctor's offices, especially pediatricians, who can help people navigate the systems and follow up recommendations.

Intentional focus on programs that are culturally relevant to underserved, marginalized populations

Provide quality childcare during adult-centered programming, not just play time.

social workers in doc offices

Offer publications various languages to meet the language needs of parents

Ensure services are distributed across the whole community but then also targeted to places with disadvantages we know and then tailored to local needs..

SBIRT trained, supporting recovery efforts in the community, partnering with Substance tx and MH services to increase access, transportation, using other health resources such as SWACH to reach individuals and families.

In what way can we provide services that impact this domain?

Communities in Schools programs and Communities That Care coalitions, combined with investment to provide implementing of add'l services.

Create spaces that encourage positive activity (thru safe routes to school and complete streets) as well as maintaining things well (parks and other public spaces).

Have more free physical activities like swimming class, ballet, acrobatic, basketball, football etc. Most of the times parents need to pay registration fee, uniform and our families can not afford it. It will be an amazing way of Substance Abuse Prev.

Partnered with Burlington Northern to put in streetlights in a park in a small community to reduce substance use and increase safety.



Health Care and Quality



Access to Health Care

Access to Primary Care

Health Literacy



In what way can we provide services that impact this domain?

school-based health centers!

Accessibility. Lack of transportation. Some are home bound. Not mobile.. Technology.

We are doing SBIRT in Seattle public schools

partnering with providers to offer on-site mental health care in schools

Increase access to telehealth services and provide transportation to appointments

The SBIRT professionals partner with our coalition to facilitate prevention programming

substance use prevention specialist based in schools

Transportation/gas vouchers for rural care

Partner to provide back-to-school health screening, vaccinations, etc. along with other back-to-school services such as school supplies pick up.

In what way can we provide services that impact this domain?

Screenings & resources during sports physicals - many schools host on-site physical clinics for student-athletes.

Training in cultural humility and culturally relevant programs and services for staff at all levels

Utilizing county transportation, such as from Senior Services, to help people get themselves or their family members to appointments in rural areas,



Neighborhood and Built Environment



Crime and Violence

Environmental Conditions

Quality of Housing



In what way can we provide services that impact this domain?

neighborhood store advertising assessment - promotion of alcohol, tobacco, marijuana

Vape-free signage in parks and other public places

Youth and community participatory murals focusing on positive empowerment!

Access to healthy food, especially in areas with food deserts; community gardens, teaching young people how to grow their own food

encourage development of youth-focused activity spaces: skate parks, mountain bike skills parks, etc.

Support stable, affordable housing

Linking youth who are at higher risk for substance use or involved in the juvenile justice system to community garden projects

Active environments - Safe routes to school

Support safe public spaces and programs that provide mental/beh. health response for calls that may usually bring law enforcement.

In what way can we provide services that impact this domain?

youth participatory budgeting and leadership

Social and Community Context

Discrimination

Incarceration

Social Cohesion



In what way can we provide services that impact this domain?

Help for reentry after incarceration

Working with community groups, clubs, churches to strength connections and support members who are struggling

Include and partner with the recovery community for coalition activities

Doing more one on one outreach, asking our community if there is anything that we can help with. Sometimes people are afraid to ask for help, It can be stigma, lock of language, not trust strangers to find out about their family situations,

community meals, community connection activites

Mental/beh health response triage instead of law enforcement as the main 1st responders... safe public spaces. Engage community in positive, pro-active discussions (like participatory budget development by local gov'ts)

participatory budgeting

youth leadership and youth-led activities

Promote healing arts programming (music, dance, poetry, etc.)

In what way can we provide services that impact this domain?

Community advocacy and services for soldiers reentry into civilian life. High suicide rate.

More free educational skills, ESL online classes, Financial assistance, referrals.

Have wrap-around services based at schools and include transportation vouchers to off-site resources.

More free educational skills, ESL online classes, Building online careers for free, financial support for bills.

Support entrepreneurship programs and increase access to, and help folks apply to, grant funding

Supporting entrepreneurship programs and increasing access to applying for grant funding



Economic Stability



Employment

Food Insecurity

Housing Stability

Poverty



In what way can we provide services that impact this domain?

Work with libraries, schools etc for resume and job application help.

Increase enrollment in supportive programs, such as WIC/SNAP

Have wrap-around services based at schools with transportation vouchers to off-site services/resources.

Provide stipends or food or child care to ensure better access to prevention coalition activities - address some basic needs in how meetings are conducted.

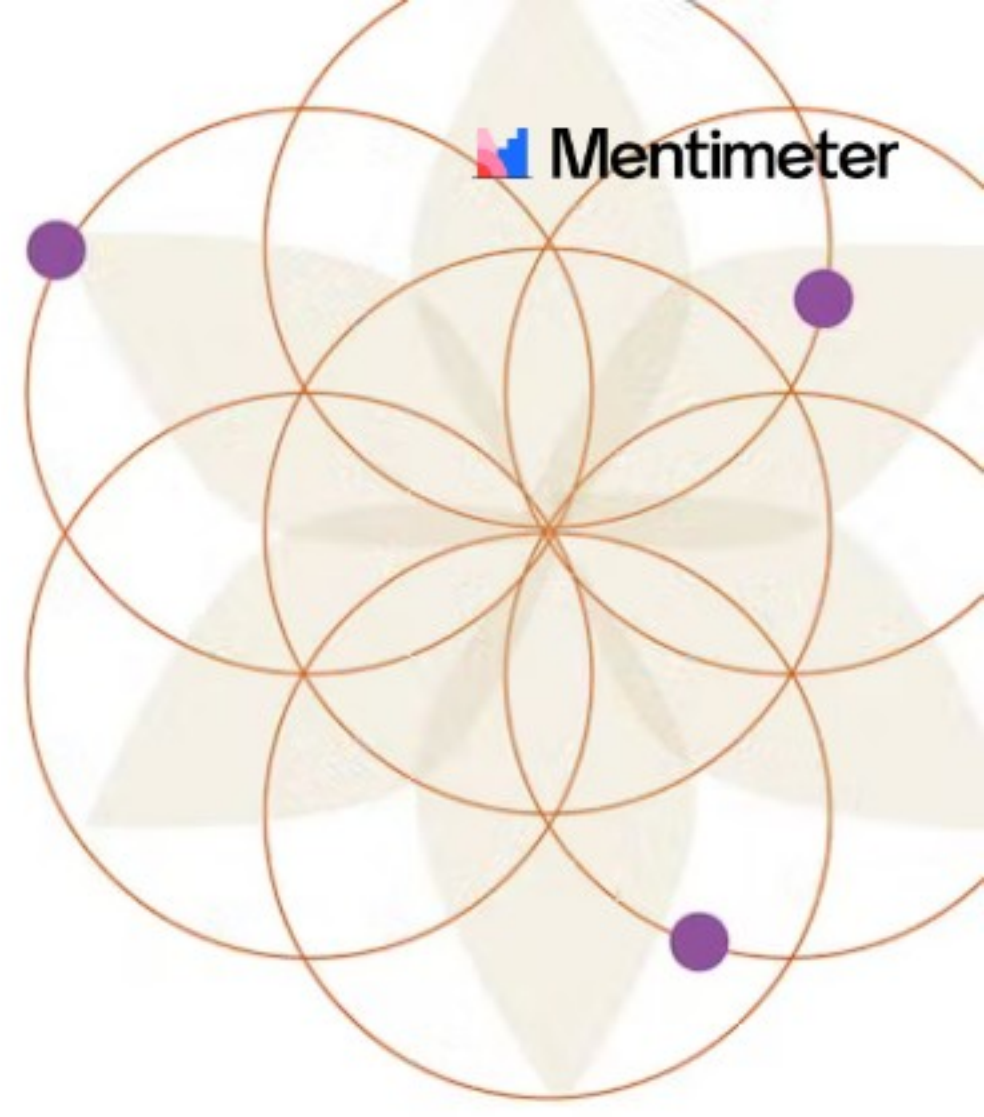
Tax credit supports

Free educational skills, ESL online classes, financial support, careers online for free.

Work with local businesses to connect people to jobs

More education around services to make people aware of what help there is

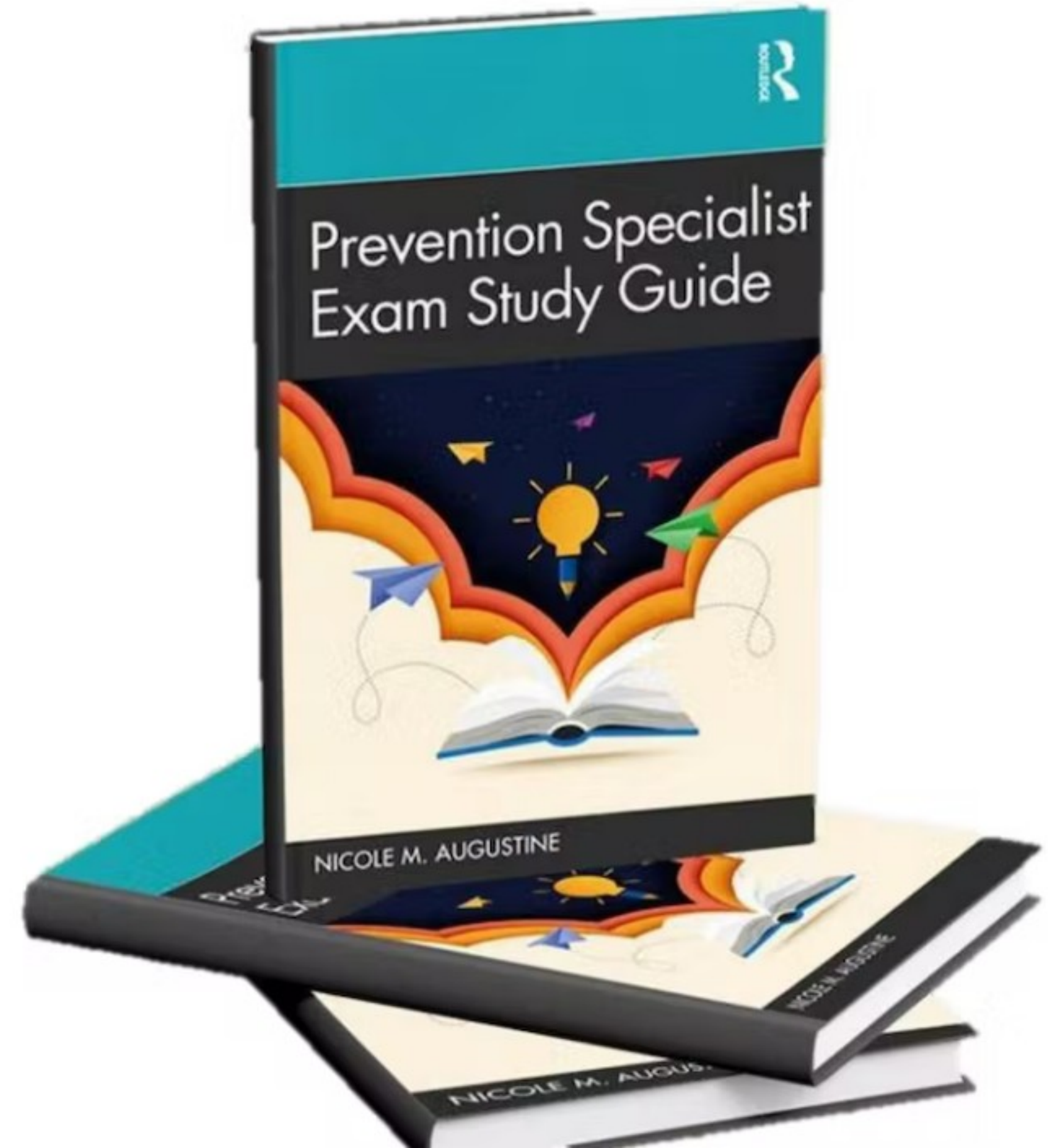
Work with schools to help students identify a path after high school before they graduate



New Resource Now Available!



SCAN ME





Nicole M Augustine

- Founder & CEO of RIZE Consultants, Inc
- Justice, Equity, Diversity & Inclusion (JEDI)
- Professional development for Prevention Specialist
- Strategic planning

