

WSIPP Evidence-Based Practice Resources

Exploring the Interface between Evidence
Rating Systems and Practitioners

Washington State Institute For Public Policy

**Adam
Darnell, Ph.D.**

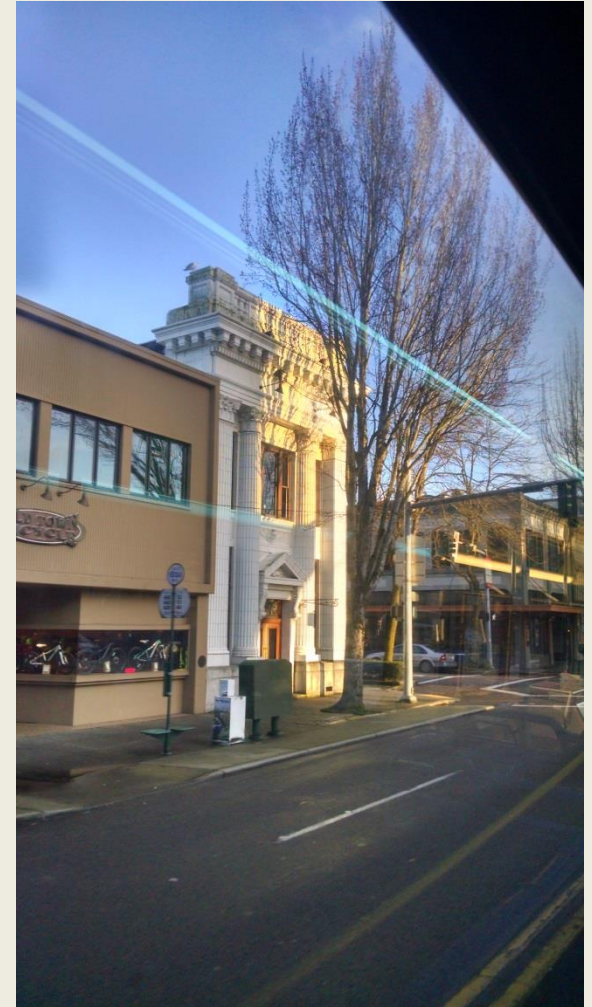
November 3,
2017

Washington State Institute for Public Policy (WSIPP)

Created by the 1983 Legislature

Mission: carry out non-partisan
research at the direction of the
Legislature

- Meta-analyses
- Benefit-cost analyses
- Evaluations

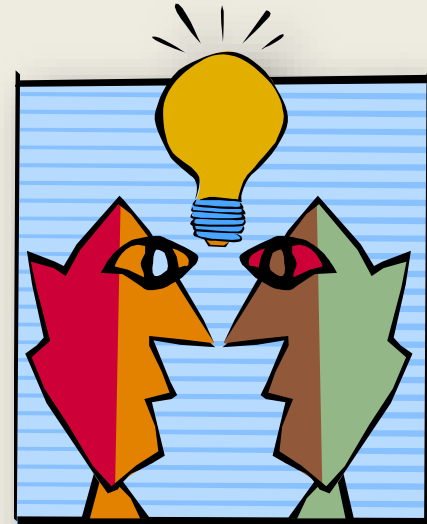


Presentation Overview

- Preliminaries
 - Who is in the audience?
 - Feel free to participate
 - Working definition of evidence-based practice
 - WSIPP resources within the landscape of evidence ratings systems
- WSIPP resources
 - How do you use WSIPP resources?
 - Inventories
 - Benefit-cost results on the web
 - Original research
- A closer look at WSIPP's approach to evidence
 - Effectiveness
 - Benefit-cost
 - Bringing them together in the 3-tiered evidence classification
 - 2 recent inventories
- Discussion

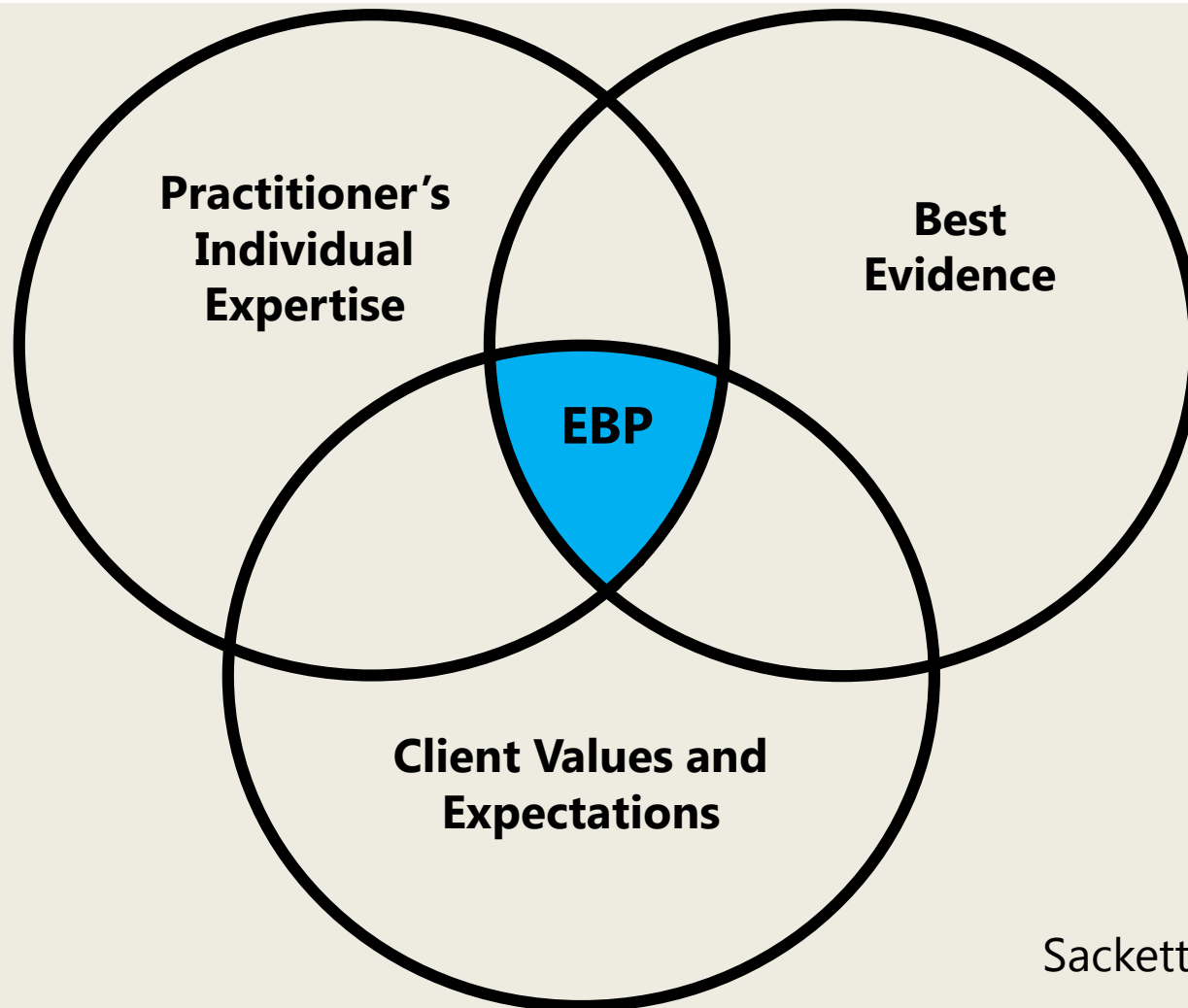
Evidence-Based Practice is...

The integration of best research evidence with clinical expertise and patient values



(Institute of Medicine, 2001)

EBP is the *integration* of...

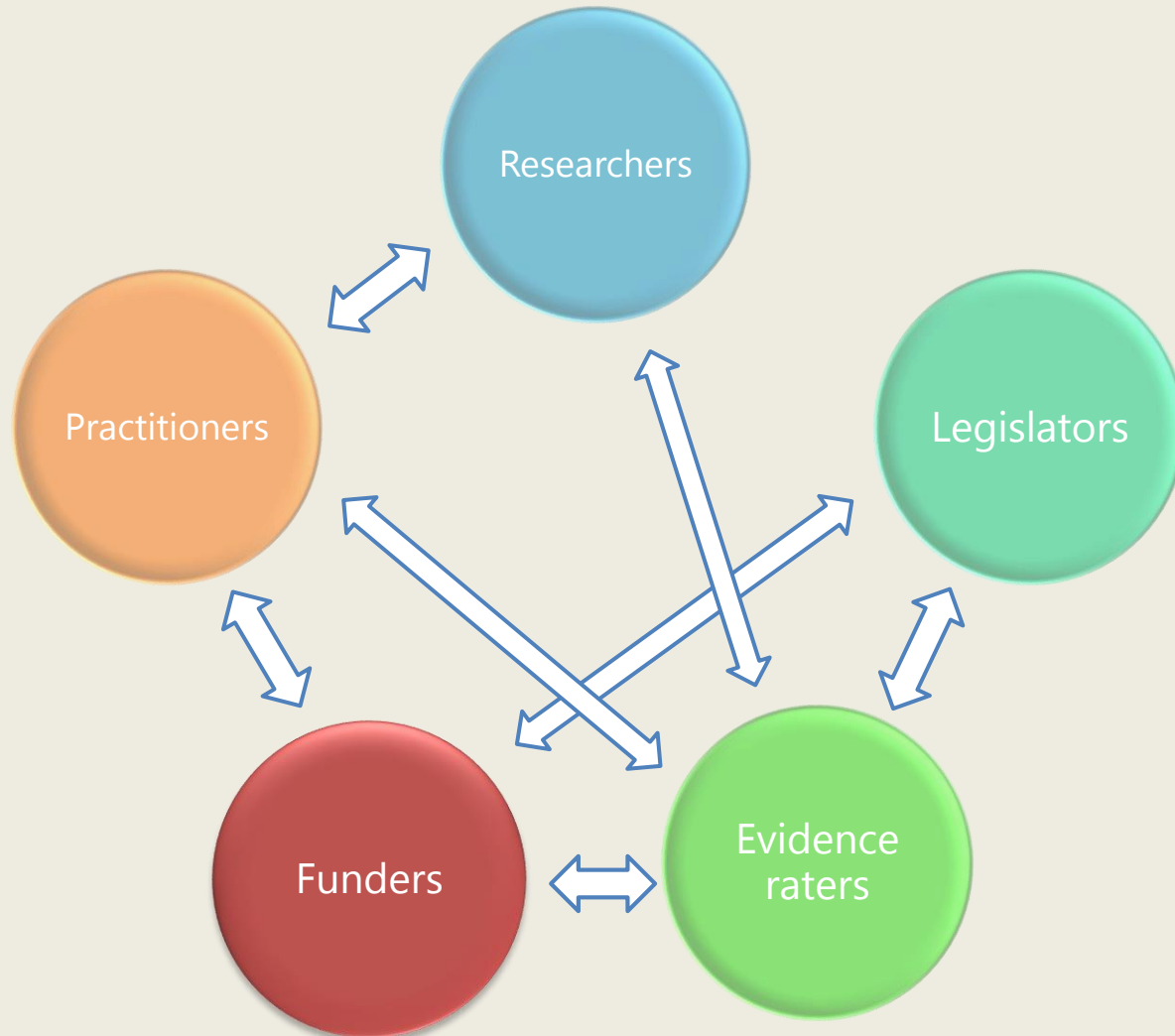


Sackett et al., 1997

Connecting research and practice



Connecting research and practice



Your Turn...

Show of hands: Who has used the WSIPP website?

What do you use the WSIPP website for for?

What other resources do you use for evidence-based practice?

Overview of WSIPP Resources

■ Inventories

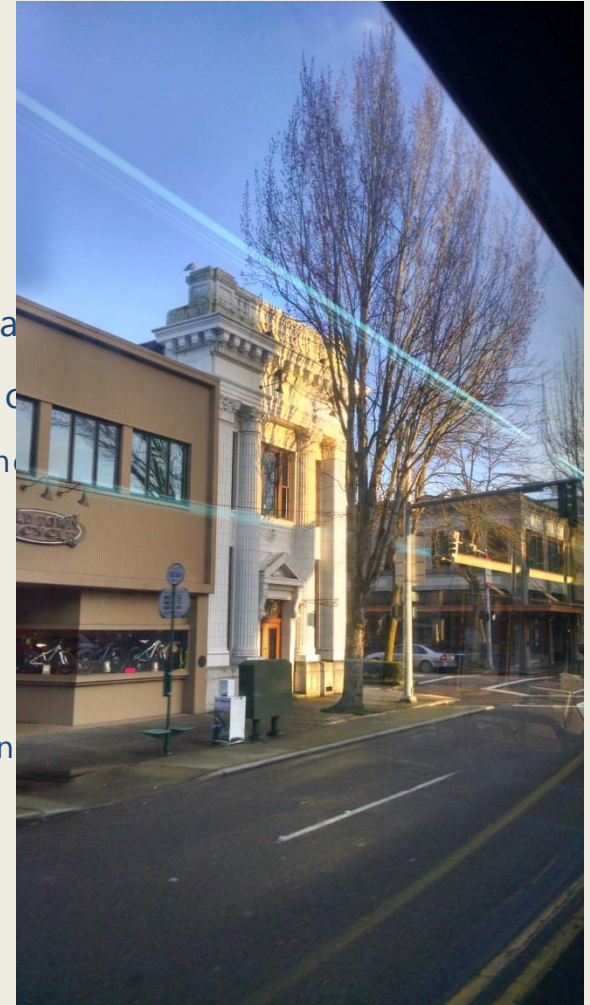
- Topically limited
- Driven by legislative requirement (inflexible)
 - Assortment of update schedules and overlapping content
- Inventories always include latest results from website and reports
- Inventories are designed to be a starting point for practice evaluation
 - Further research into the evidence for a given program is not required

■ Benefit-cost results

- Evidence ratings (EB, RB, PP) are not provided
- Updated annually ~ January
 - Results on the web may be more current than a given inventory

■ Original research

- Outcome and benefit-cost evaluations (e.g., I-502)



A closer look at WSIPP's approach

■ Effectiveness

■ Meta-analysis

- Average effect across all credible studies on a topic
- Some research doesn't count—comparison or control groups required
- Example: [Too Good for Drugs](#)
 - www.wsipp.wa.gov → Benefit-cost results →
→ [select a budget area] → [select a topic] → Meta-Analysis
- Key information: outcomes, number of effects, unadjusted effect size (sign and magnitude)

■ Some programs are actually groups of programs (i.e., "topics")

- Example: [Mentoring for students](#)
- Search "mentoring"

A closer look at WSIPP's approach

- Benefit-cost results
 - Effect sizes → linked outcomes → monetary benefits
 - Example: cannabis use disorder affects high school graduation, which, in turn affects lifetime labor market earnings
 - Example 2: [Mentoring](#) has a direct effect on high school graduation
 - Exploring benefits
 - Benefits are per-participant, life cycle values
 - Benefits are driven more heavily by some outcomes than others
 - Exploring costs
 - Example: [Positive Action](#)
 - Further research on program is needed to estimate your actual costs (startup, ongoing, etc.)
 - Due to uncertainty in calculating benefits, we estimate percent chance NPV is positive
- Other notes on B-C results
 - Not all outcomes can be monetized – for example, GPA, school attendance, etc...
 - programs without b-c results cannot be EB
 - Evidence ratings not provided

Effectiveness + Benefit-cost = Rating

- WSIPP's three-tiered evidence rating system
 - [Definitions](#)
 - [Flow chart](#)

Inventories

- Sole source for WSIPP evidence ratings
- Typically limited, schedules vary, overlapping content
- Evidence rating can be based on diverse outcomes, especially in the prevention category
 - Example: [Mentoring](#)
- 2 recent inventories
 - [Cannabis prevention and treatment](#)
 - Denotes effectiveness for cannabis specifically
 - [Children and youth services](#)

Other WSIPP Website Tips

- Searching b-c results
- Browsing b-c results
 - Scroll down for other topics reviewed and meta-analyzed
- PDF of b-c results can be saved for static version
- Searching reports to find inventories
- [WSIPP Technical Appendix](#)

Q & A

Contact

www.wsipp.wa.gov

adam.darnell@wsipp.wa.gov

360.664.9074